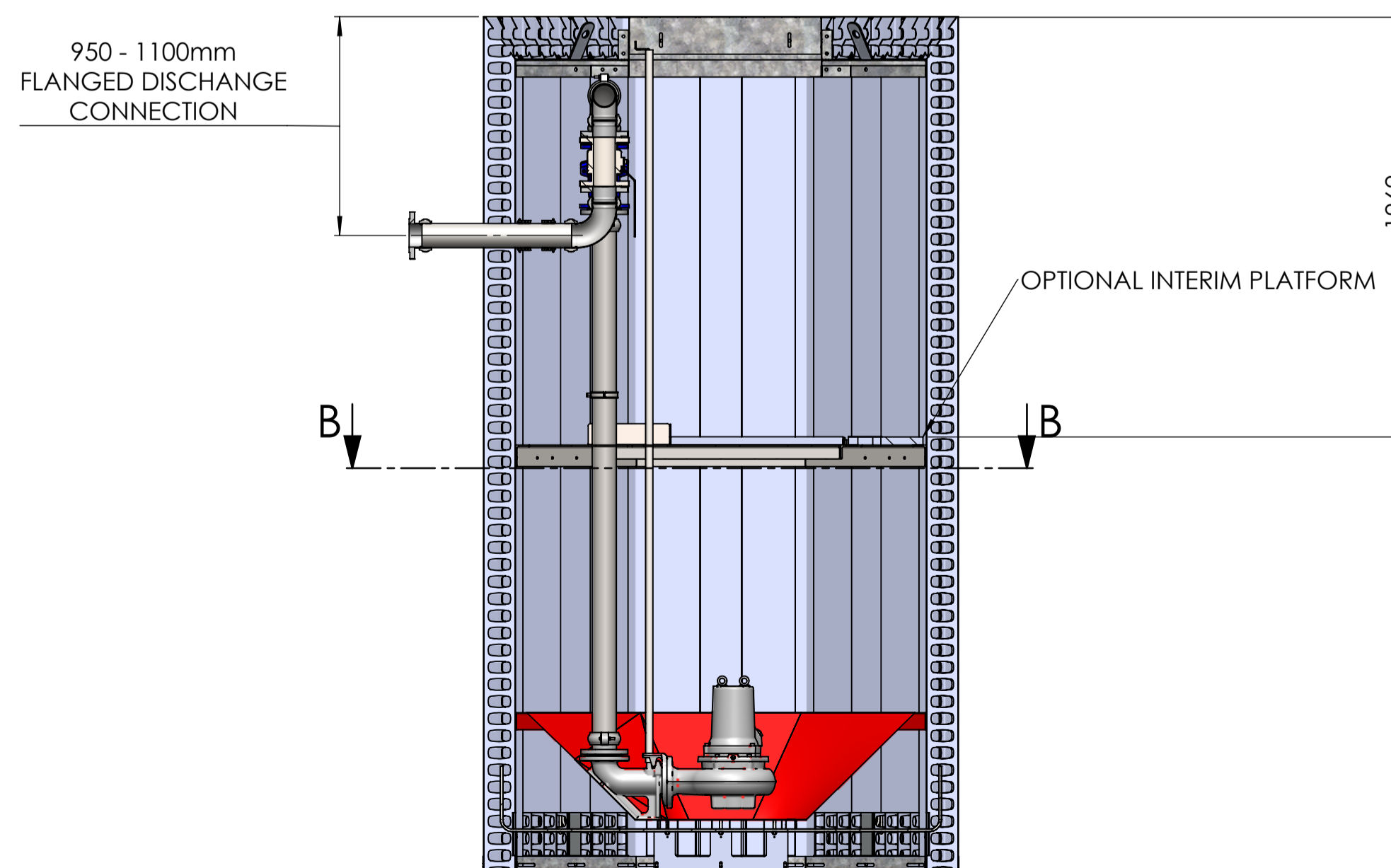
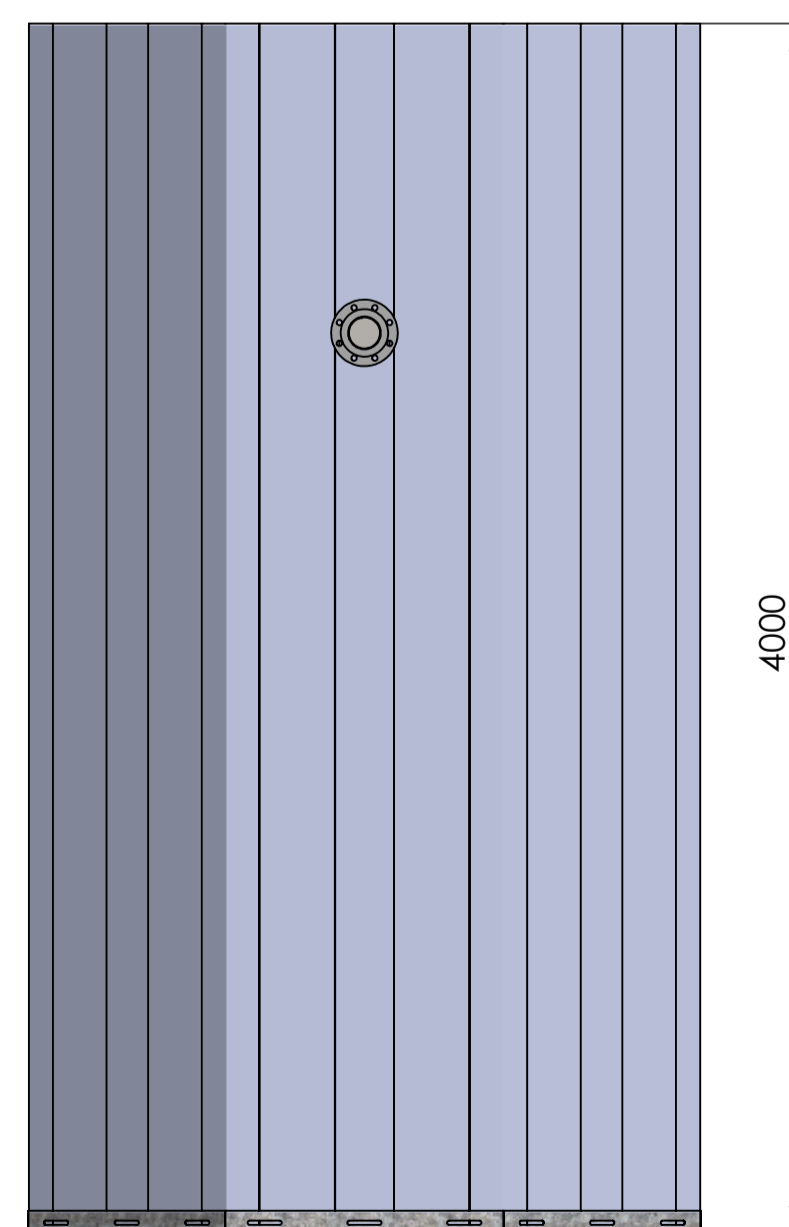


SECTION B-B
SCALE 1 : 25

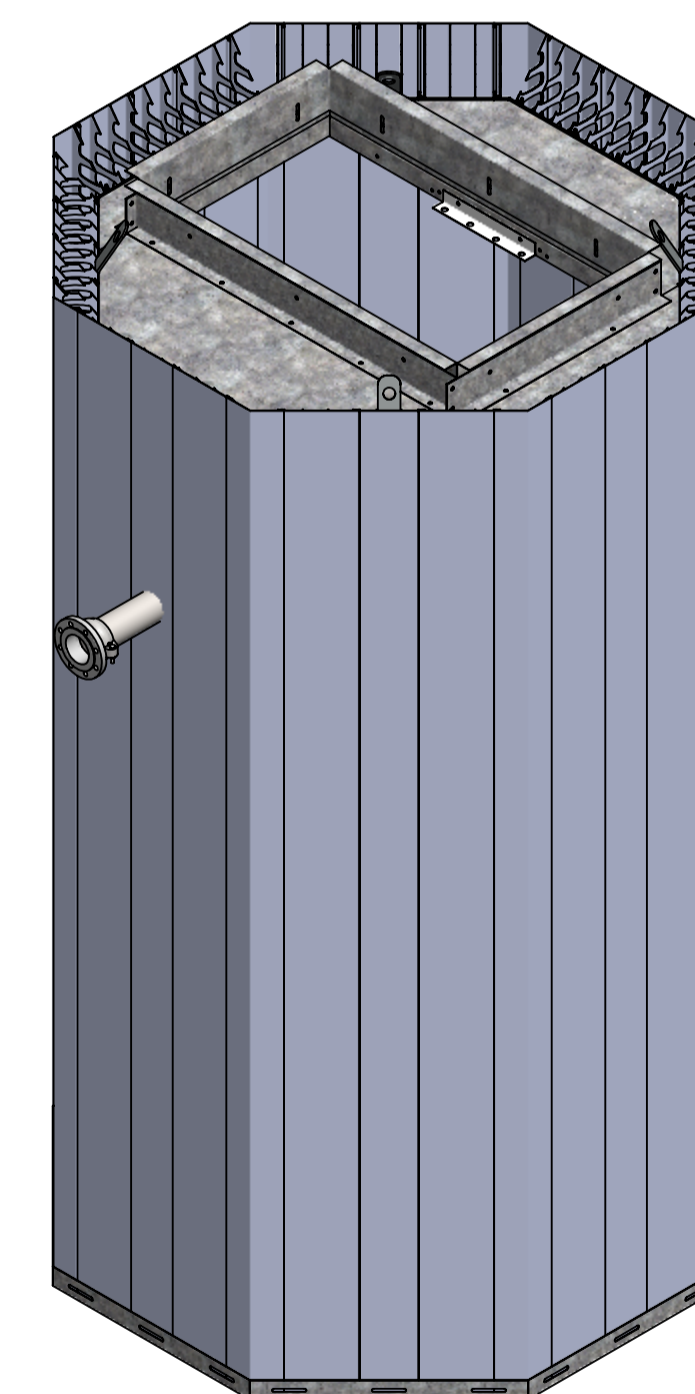
NOTES:

For information only, for further details refer to contract specific drawings.
Pipework shown is indicative. This product is available with pipework sizes from DN50 to DN150
Standard pipework type is Stainless Steel with flexible grooved couplings. Other materials available on request.

Approximate Delivered Weight = 717.32
The weight stated is indicative only and may vary according to specific product specification.



SECTION A-A
SCALE 1 : 25



DUTYPOINT SETTING THE BAR <small>ALL DIMENSIONS IN MM UNLESS OTHERWISE STATED DO NOT SCALE DRAWING IF IN DOUBT ASK</small>	 THIRD ANGLE SHEET 1 OF 1	DRAWING NUMBER:	DRAWING REV:
		Q20.400P	
<small>SHEPHERD ROAD, GLOUCESTER GL2 5EL (T): 01452 300 110</small>		DESCRIPTION:	DATE:
<small>SUITABILITY BIM REV</small>		QUIKFORM PUMP CHAMBER	04/02/2020
<small>BIM REF:</small>		DRAWN: STEPHEN BARBER APPRD: RELED:	PROPRIETARY AND CONFIDENTIAL