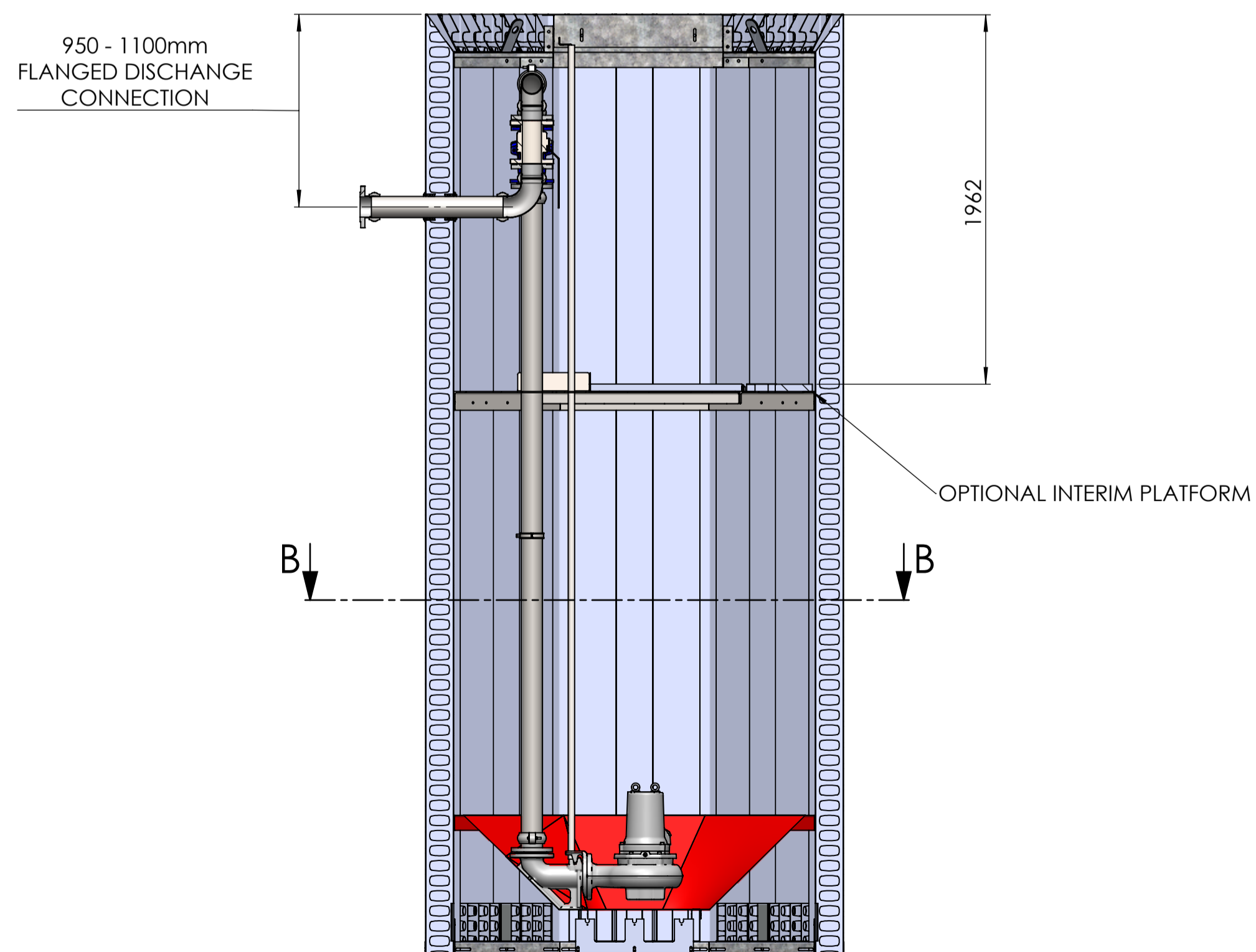
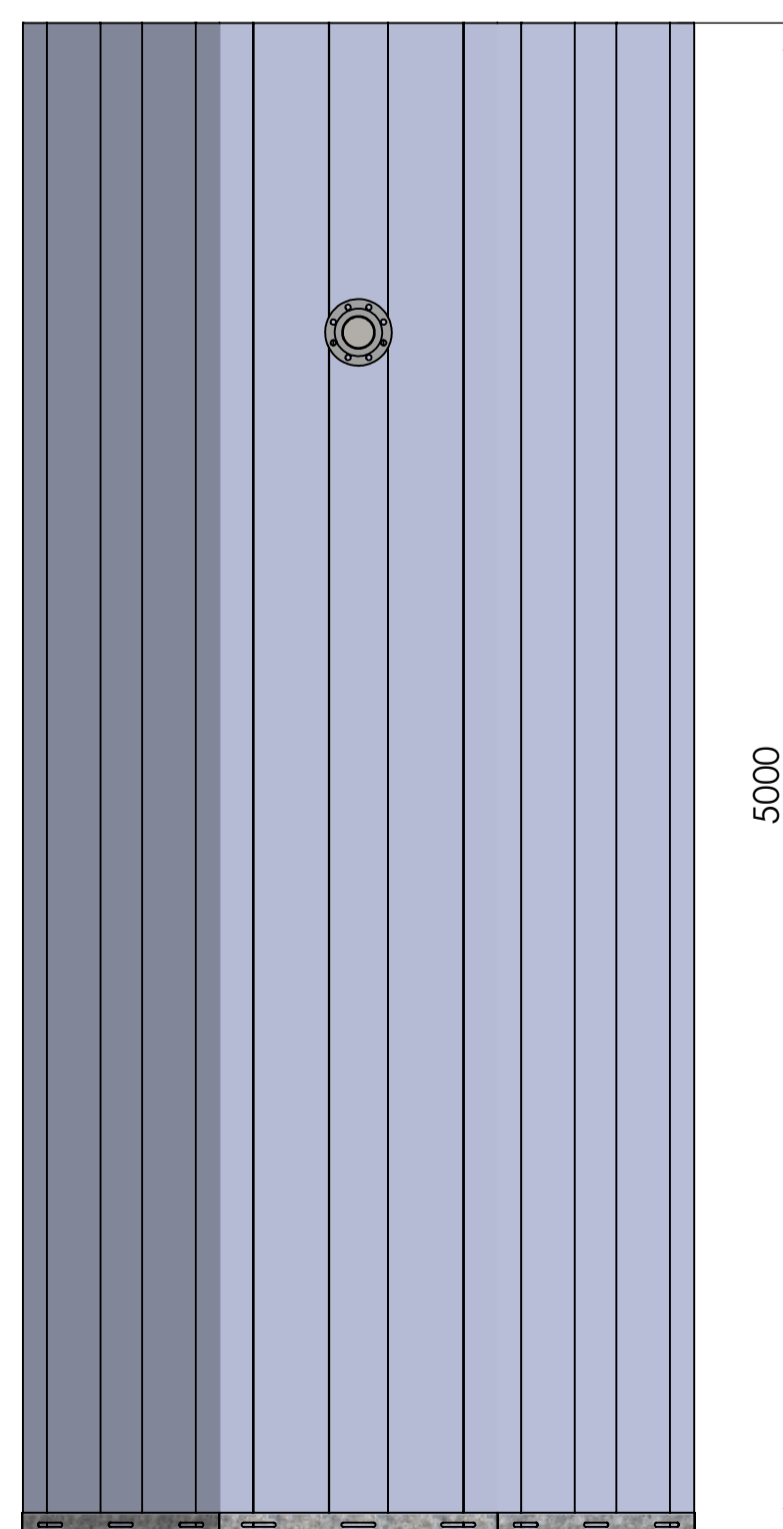
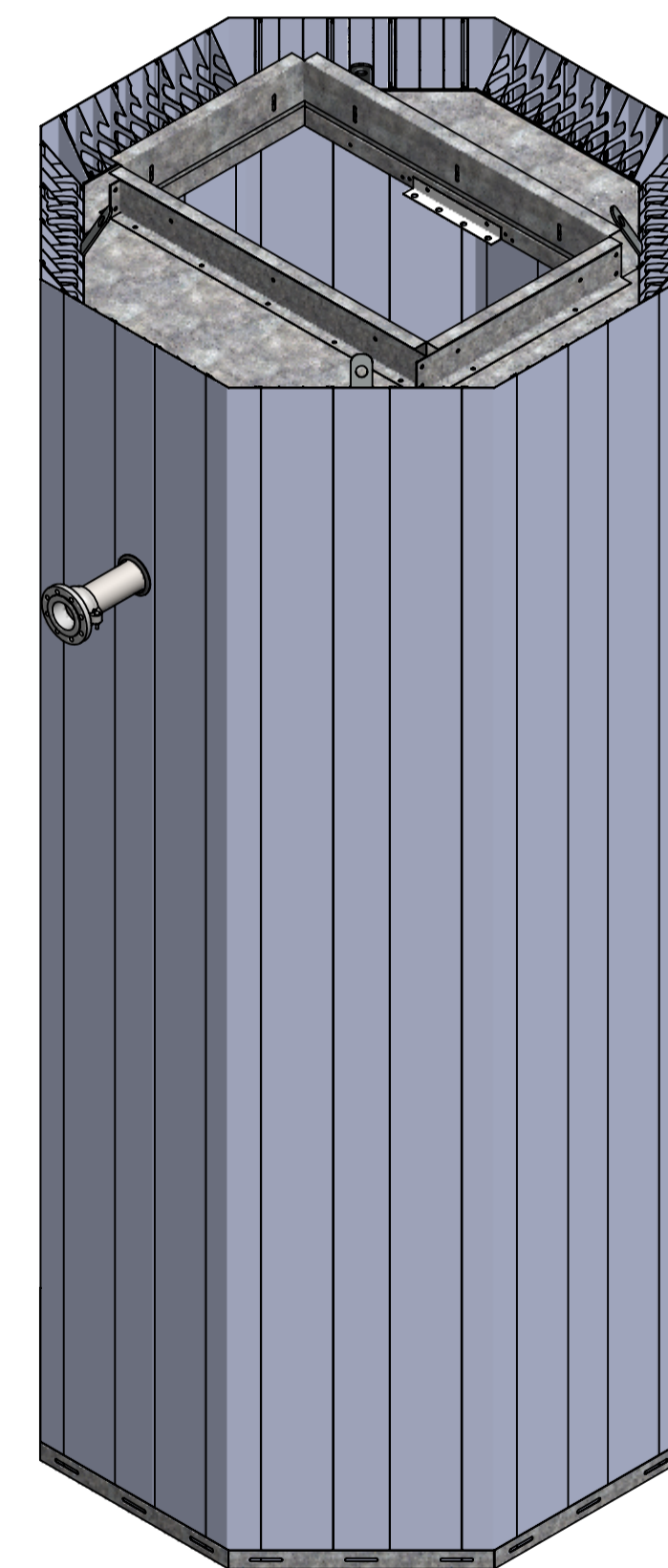


SECTION B-B
SCALE 1 : 25



SECTION A-A
SCALE 1 : 25



NOTES:

For information only, for further details refer to contract specific drawings.
Pipework shown is indicative. This product is available with pipework sizes from DN50 to DN150
Standard pipework type is Stainless Steel with flexible grooved couplings. Other materials available on request.

Approximate Delivered Weight = 767.19
The weight stated is indicative only and may vary according to specific product specification.

DUTYPOINT <small>SETTING THE BAR</small> <small>ALL DIMENSIONS IN MM UNLESS OTHERWISE STATED</small> <small>DO NOT SCALE DRAWING IF IN DOUBT ASK</small> SHEPHERD ROAD, GLOUCESTER GL2 5EL (T): 01452 300 110 BIM REF:	 THIRD ANGLE SHEET 1 OF 1 SCALE: AS STATED SHEET SIZE A1 SUITABILITY BIM REV	DRAWING NUMBER: Q20.500P	DRAWING REV
		DESCRIPTION: QUIKFORM PUMP CHAMBER	
		DRAWN: STEPHEN BARBER	04/02/2020
		APPRD:	
		RELED:	
<small>PROPRIETARY AND CONFIDENTIAL</small>			