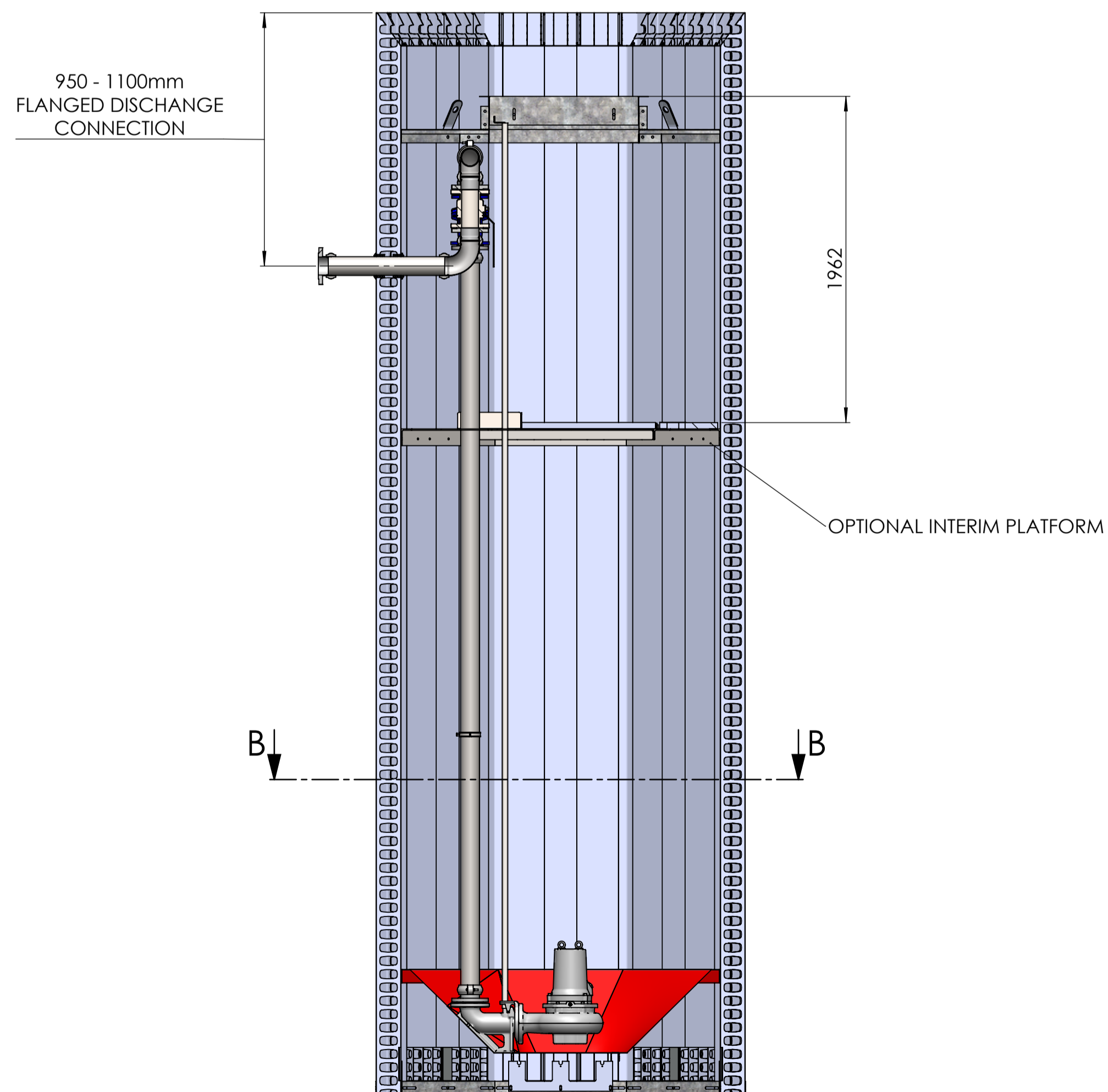
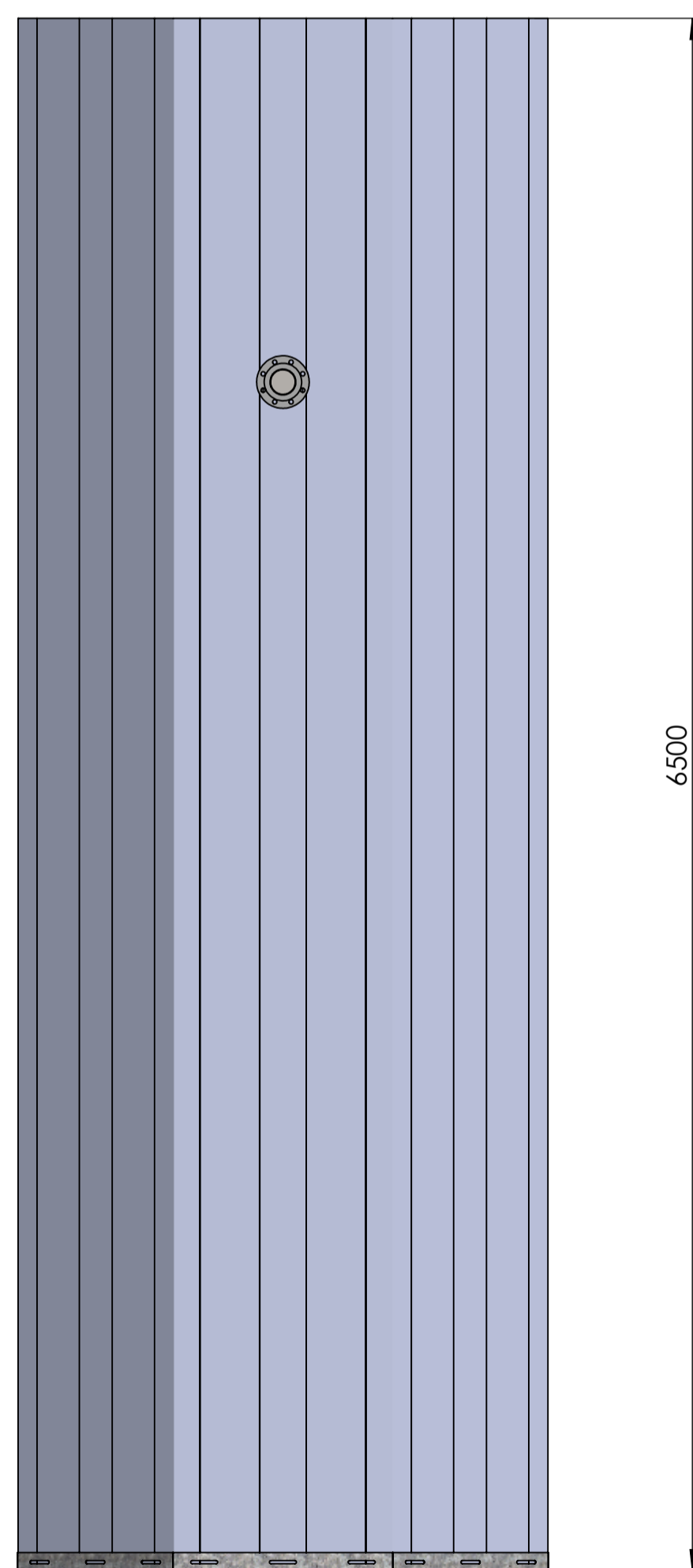
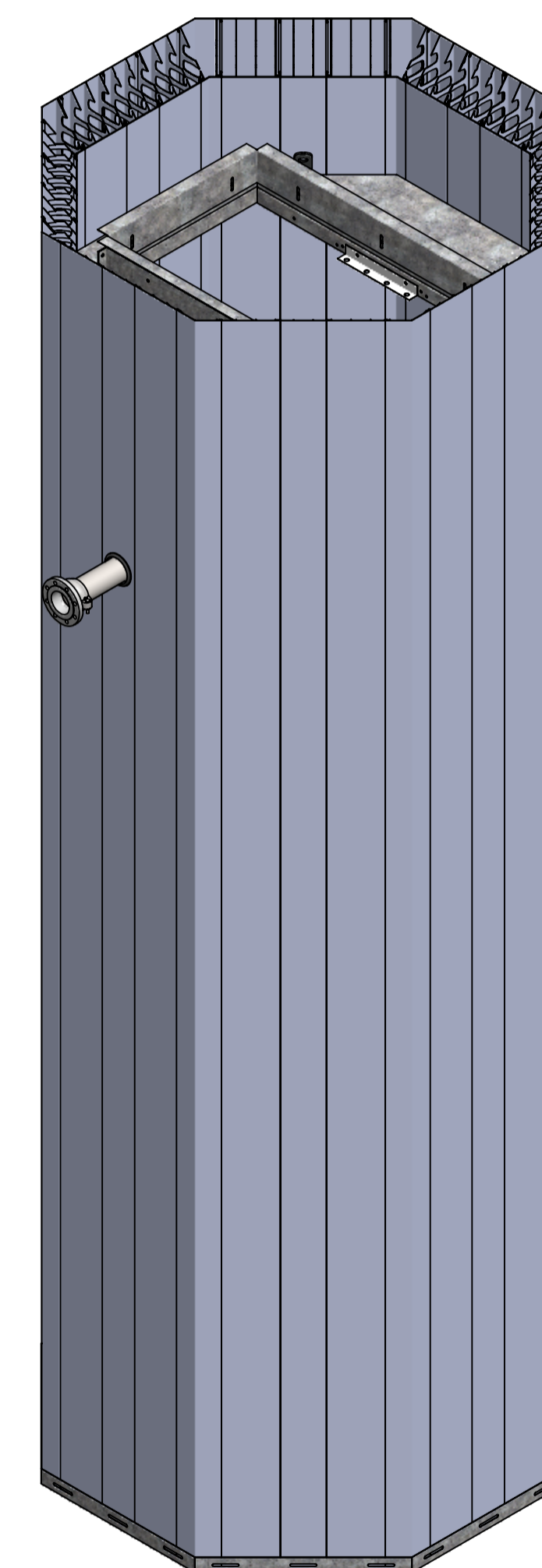


SECTION B-B  
SCALE 1 : 25



SECTION A-A  
SCALE 1 : 25



NOTES:

For information only, for further details refer to contract specific drawings.  
Pipework shown is indicative. This product is available with pipework sizes from DN50 to DN150  
Standard pipework type is Stainless Steel with flexible grooved couplings. Other materials available on request.

Approximate Delivered Weight = 852.01  
The weight stated is indicative only and may vary according to specific product specification.

<b>DUTYPOINT</b> SETTING THE BAR <small>ALL DIMENSIONS IN MM UNLESS OTHERWISE STATED DO NOT SCALE DRAWING IF IN DOUBT ASK</small>	 THIRD ANGLE SHEET 1 OF 1	DRAWING NUMBER:	DRAWING REV:
		<b>Q20.650P</b>	
<small>SHEPHERD ROAD, GLOUCESTER GL2 5EL (T): 01452 300 110</small>	<small>SCALE: AS STATED SHEET SIZE A1</small>	<small>DESCRIPTION:</small> <b>QUIKFORM PUMP CHAMBER</b>	<small>DATE:</small> 04/02/2020
<small>BIM REF:</small>	<small>SUITABILITY BIM REV</small>	<small>DRAWN:</small> STEPHEN BARBER	<small>APPRD:</small> -
		<small>RELED:</small> -	
<small>PROPRIETARY AND CONFIDENTIAL</small>			