



**MADE IN
BRITAIN**[®]

ViroSEP

**BS EN 858 compliant stormwater
treatment systems**



ViroSEP

Oil separators that treat stormwater and make it safe to discharge into an approved discharge point.

CONTENTS

- BYP - BYPASS SEPARATORS	P.4
- RET - FULL RETENTION SEPARATORS	P.6
- FOR - FORECOURT SEPARATORS	P.8
- WAS - WASHDOWN SEPARATORS	P.10
- TRA - SILT TRAPS	P.12
- HCA - SEPARATOR ALARM SYSTEM	P.14

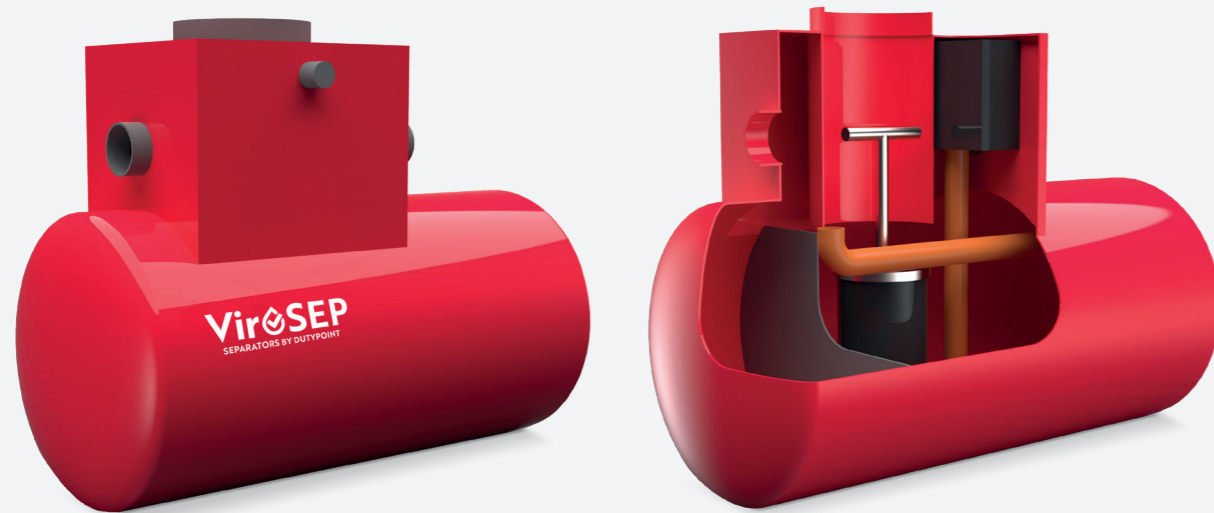
ViroSEP BYP

Bypass separators

The ViroSEP BYP range of bypass separators is designed in accordance with European Standard BS EN 858-1 to effectively treat surface water run-off to prevent hydrocarbons such as diesel, petrol and engine oil from mixing with surface water and entering the watercourse.

Bypass separators are designed to fully treat any flows generated by rainfall rates of up to 6.5 mm/hr, which covers the majority of rainfall events in the UK. As the 'first flush' flow is where the vast majority of impurities would be swept into the drainage system, this method of treatment is deemed acceptable for many applications, including car parks, roadways and industrial yards.

Bespoke/larger models are available on request.



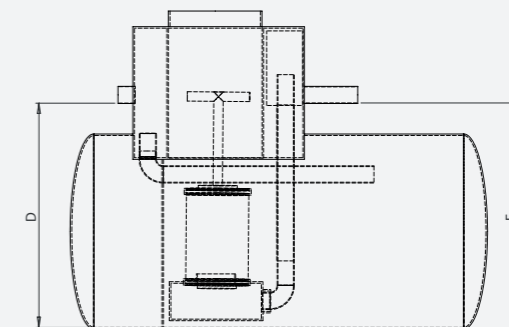
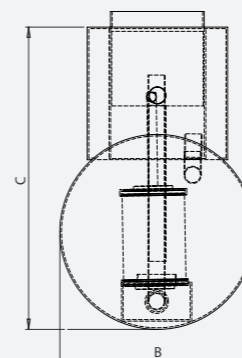
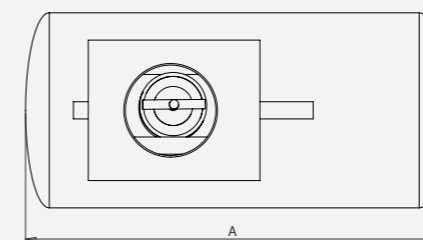
MATERIAL SPECIFICATION

GRP	Available in standard, heavy and super heavy-duty shells to site ground conditions
-----	--

ViroSEP BYP

DRAWINGS AND DIMENSIONS

Model no.	Area drained (m ²)	Silt capacity (L)	Oil storage (L)	Dimensions (mm)						
				A (length)	B (diameter)	C (height)	D (height to inlet)	E (height to outlet)	Turret diameter (Ø)	Standard pipe size
BYP-0015	833	400	60	1620	1000	1650	1125	1075	450	110
BYP-0030	1666	300	60	1620	1000	1650	1125	1075	450	110
BYP-0040	2221	400	60	1620	1000	1650	1125	1075	450	110
BYP-0045	2500	450	67.5	2380	1000	1650	1125	1075	600	110
BYP-0060	3330	600	90	2380	1000	1650	1125	1075	600	110
BYP-0100	5550	1000	150	2680	1250	1950	1325	1325	600	110
BYP-0150	8330	1500	225	2220	1850	2535	1875	1875	600	160
BYP-0200	11,100	2000	300	2580	1850	2535	1875	1875	750	160
BYP-0250	13,880	2500	375	3110	1850	2535	1875	1875	750	160
BYP-0300	16,660	3000	450	3700	1850	2535	1875	1875	750	160
BYP-0400	22,210	4000	600	4750	1800	3300	1500	1450	2 x 600	300
BYP-0500	27,770	5000	750	5900	1800	3300	1500	1450	2 x 600	300
BYP-0600	33,320	6000	900	4790	2500	4000	1500	1450	2 x 600	300
BYP-0700	38,870	7000	1050	5560	2500	4000	2200	2150	2 x 600	300
BYP-0800	44,430	8000	1200	6320	2500	4000	2200	2150	2 x 600	300
BYP-0900	49,980	9000	1350	7080	2500	4000	2200	2150	2 x 600	300
BYP-1000	55,530	10,000	1500	8400	2500	4000	2200	2150	2 x 600	300



ViroSEP RET

Full retention separators

The ViroSEP RET range of full retention separators is designed in accordance with European Standard BS EN 858-1 for use where there is a risk of regular oil contamination and/or significant spillages.

They are designed to treat the full flow of the drainage area it serves. The ViroSEP RET has an automatic closure device to prevent any risk of spillage of contaminated water downstream when the contained oil exceeds maximum capacity.

Bespoke/larger models are available on request.



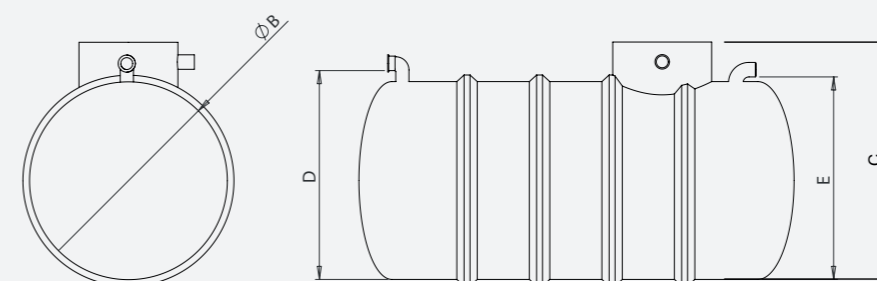
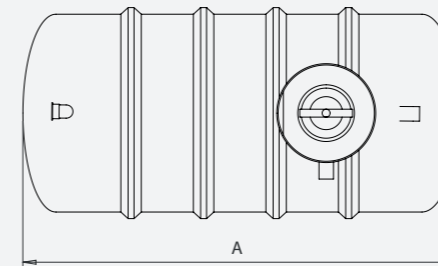
MATERIAL SPECIFICATION

GRP	Available in standard, heavy and super heavy-duty shells to site ground conditions
-----	--

ViroSEP RET

DRAWINGS AND DIMENSIONS

Model no.	Area drained (m ²)	Silt capacity (L)	Oil storage (L)	Dimensions (mm)						
				A (length)	B (diameter)	C (height)	D (height to inlet)	E (height to outlet)	Turret diameter (Ø)	Standard pipe size
RET-0015	80	150	13	1400	1000	1300	1100	1050	600	110
RET-0030	170	300	30	1750	1000	1300	1100	1050	600	110
RET-0040	220	450	40	2025	1000	1550	1100	1050	600	110
RET-0060	330	600	60	3030	1250	1550	1350	1300	600	110
RET-0100	560	1000	100	3370	1250	1550	1350	1300	600	110
RET-0150	830	1500	150	3275	1500	1550	1600	1550	750	160
RET-0200	1110	2000	200	4300	1500	2150	1600	1550	750	160
RET-0250	1390	2500	250	3755	1850	2150	2000	1950	750	160
RET-0300	1670	3000	300	4420	1850	2150	2000	1950	750	160
RET-0400	2220	4000	400	5765	1850	2150	1950	1900	2 x 750	160
RET-0500	2780	5000	500	7115	1850	2800	1950	1900	2 x 750	160
RET-0600	3330	6000	600	4975	2500	2800	2600	2550	2 x 750	160
RET-0700	3890	7000	700	6025	2500	2800	2600	2550	2 x 750	106
RET-0800	4440	8000	800	6379	2500	2800	2600	2550	2 x 750	160
RET-0900	5000	9000	900	7120	2500	2800	2600	2550	3 x 750	160
RET-1000	5560	10,000	1000	7890	2500	2800	2600	2550	3 x 750	225
RET-1300	7220	13,000	1300	10,100	2500	2800	2600	2550	3 x 750	225
RET-1500	8330	15,000	1500	11,540	2500	2800	2600	2550	4 x 750	300



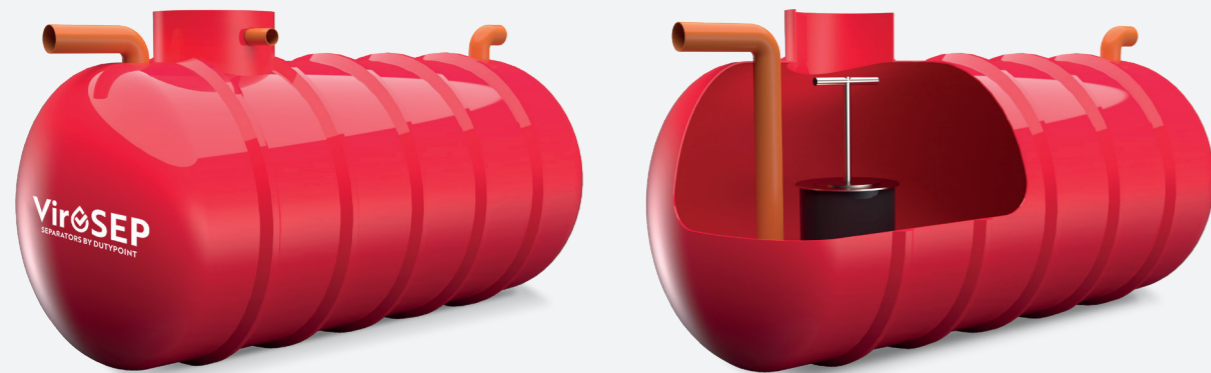
ViroSEP FOR

Forecourt separators

Forecourt separators are designed for specific use in petrol stations, refuelling facilities, fuel storage depots and other similar applications to guard against accidental fuel spillage.

The size of this separator has been specifically designed to retain the possible loss of the contents from one compartment of a road tanker, which could be up to 7,600 litres.

Forecourt separators are an essential infrastructure requirement for all forecourts to ensure compliance with health, safety and environmental regulations.



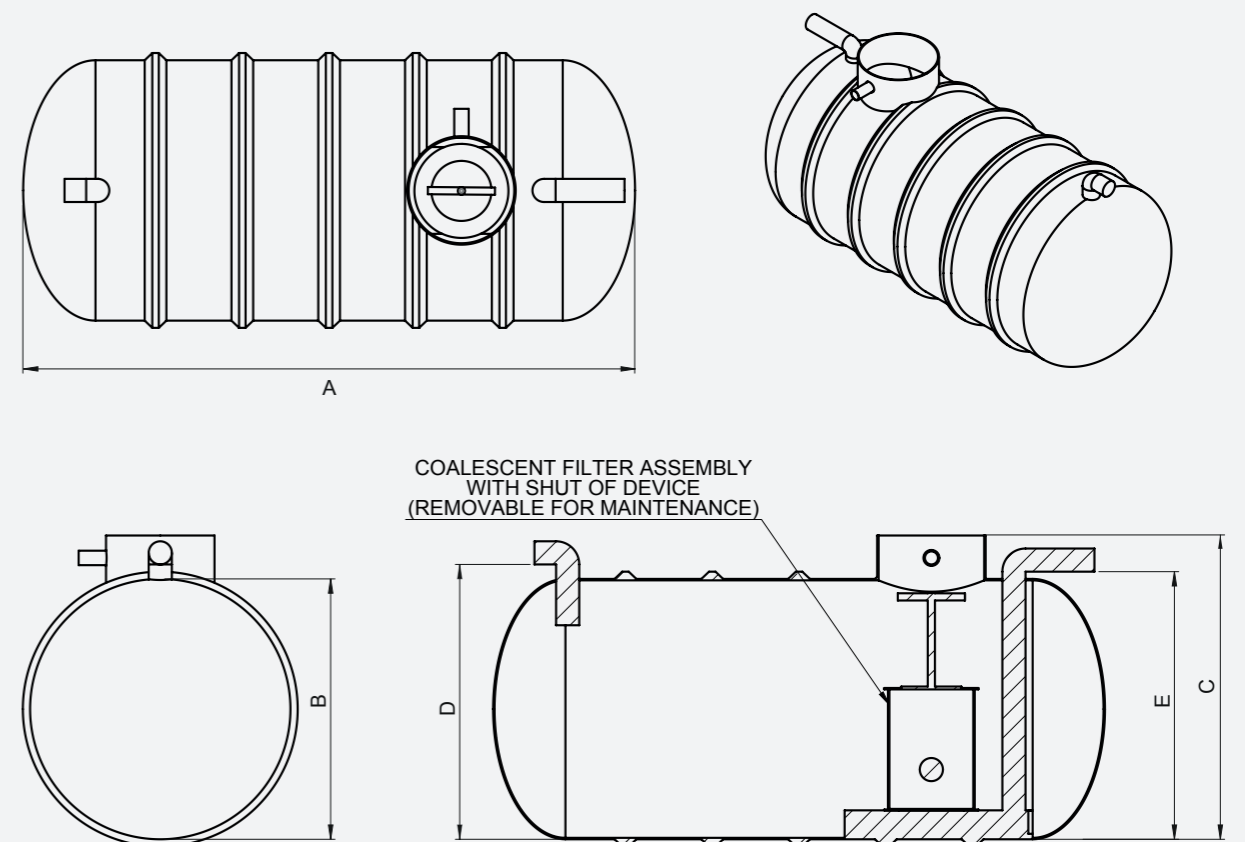
MATERIAL SPECIFICATION

GRP	Available in standard, heavy and super heavy-duty shells to site ground conditions
-----	--

ViroSEP FOR

DRAWINGS AND DIMENSIONS

Model no.	Dimensions (mm)						
	A (length)	B (diameter)	C (height)	D (height to inlet)	E (height to outlet)	Turret diameter (Ø)	Standard pipe size
FOR-10	3800	1850	2100	1900	1850	750	160



ViroSEP WAS

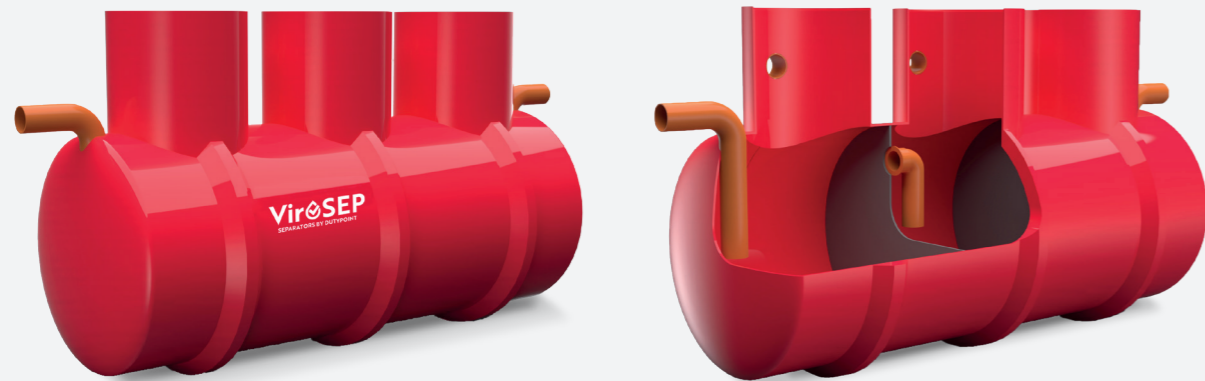
Wash-down separators

Wash-down separators are designed to remove silt and debris from water run-off. They are typically installed at car wash facilities and other industrial wash-down facilities.

As the wash-down separator fills with contaminated water, sediments such as silt and other debris, such as dirt and dust, settle at the bottom of the tank below the pipe's invert. When the water level reaches the outlet pipe, it safely leaves the separator and continues to the drainage system - leaving all forms of sediment at the bottom of the tank.

If required, a silt trap can also be installed upstream of the wash-down separator to limit any potential blockages, damage or flooding in the tank.

Bespoke/larger models are available on request.



MATERIAL SPECIFICATION

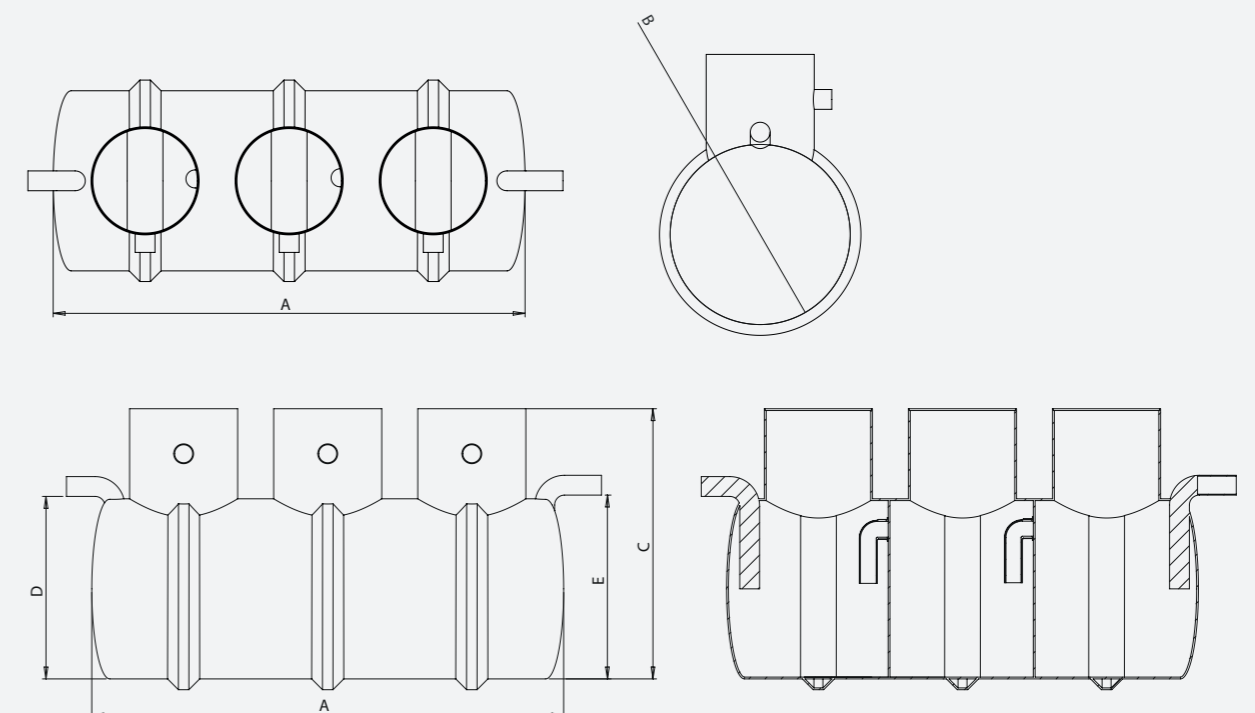
GRP	Available in standard, heavy and super heavy-duty shells to site ground conditions
-----	--

ViroSEP WAS

DRAWINGS AND DIMENSIONS

Model no.*	Capacity (L)	Dimensions (mm)						
		A (length)	B (diameter)	C (height)	D (height to inlet)	E (height to outlet)	Turret diameter (Ø)	Standard pipe size
WAS-X02	2000	2000	1250	1550	1350	1300	600	110
WAS-X03	3000	2850	1250	1550	1350	1300	600	110
WAS-X05	5000	3050	1500	1800	1600	1550	600	160
WAS-X08	8000	3470	1850	2150	1950	1900	600	160
WAS-X10	10,000	4230	1850	2150	1950	1900	600	160
WAS-X12	12,000	5070	1850	2150	1950	1900	600	160
WAS-X15	15,000	6200	1850	2150	1950	1900	600	160
WAS-X18	18,000	4200	2500	2800	2600	2550	600	160
WAS-X20	20,000	4800	2500	3000	2600	2550	600	160

*Each wash-down separator size is available in either one, two or three-stage versions. Replace 'X' with 1, 2 or 3 to denote the number of stages.



ViroSEP TRA

Silt trap

Silt traps are a compact solution for protecting the drainage network from silt at smaller wash-down facilities.

ViroSEP TRA silt traps are supplied complete with B125 or D400 grating. As the water drains through the grating directly into the trap, sediments such as silt and other debris, such as dirt and dust, settle at the bottom of the trap below the invert of the outlet pipe. When the water level reaches the outlet pipe, it safely leaves the separator and continues to the drainage system - leaving all forms of sediment at the bottom of the tank.

Bespoke/larger models are available on request.

MATERIAL SPECIFICATION

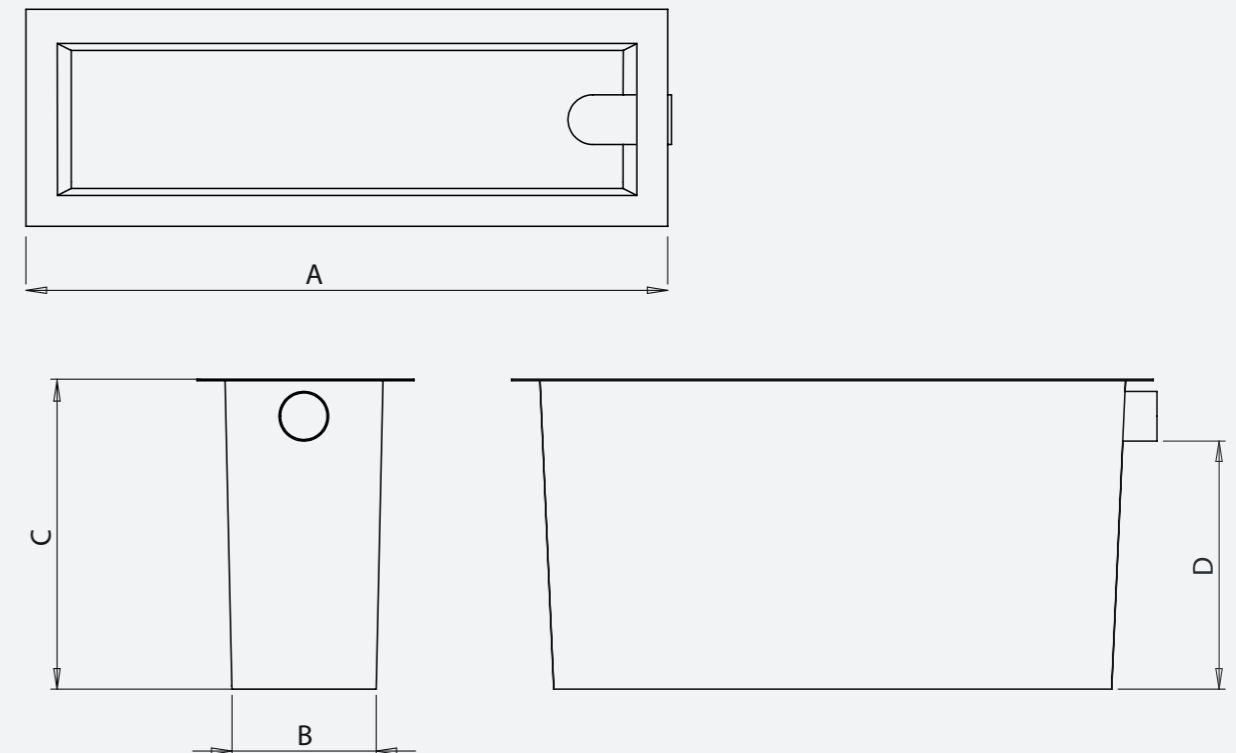
GRP	Available in standard, heavy and super heavy-duty shells to site ground conditions
-----	--



ViroSEP TRA

DRAWINGS AND DIMENSIONS

Model no.	Capacity (L)	Dimensions (mm)				
		A (length)	B (width)	C (height)	D (height to outlet)	Standard pipe size
TRA-01-B125	600	1190	690	1000	800	160
TRA-01-D400	600	1190	690	1000	800	160
TRA-02-B125	1200	2070	690	1000	800	160
TRA-02-D400	1200	2070	690	1000	800	160



ViroSEP HCA

Separator alarm system

The ViroSEP HCA system provides a reliable alarm warning in the event of a build-up of excessive levels of oil, liquid or silt. This unit has an audible alarm and a liquid crystal display and is operated by means of a simple push switch. An output relay is provided, which allows the use of an external sounder or beacon and can also be connected to your building management system (BMS).

Alarm warnings allow you time to take corrective action, ensuring the safe and economic operation of separators, preventing oil from passing through the separator and polluting watercourses which may result in expensive fines and clean-up costs.

BENEFITS

The alarm system and sensors guarantee an increased level of safety and require simple installation for bespoke monitoring of oil and petrol separators.

- Warn of excessive levels of oil, liquid and silt
- It tells you when the separator needs emptying
- Reduces waste management costs
- Designed to comply with BS EN 858-1 and 2
- Can be fitted to interceptors from all manufacturers
- Reduces interceptor servicing costs
- Ensures safe and economic operation of interceptors

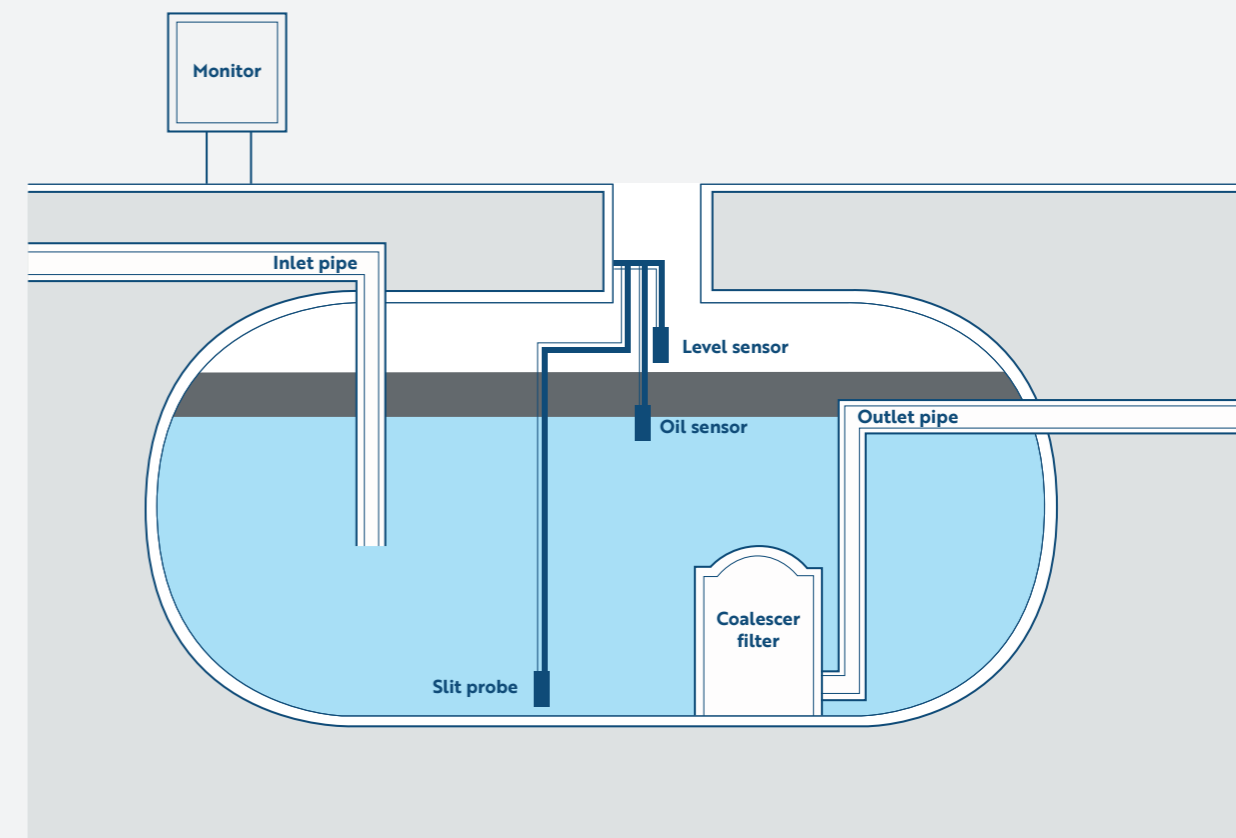
SPECIFICATION

Mains powered	230VAC
IP65 ABS enclosure	180 x 180 x 60 mm
Output	Clean contact relay
Display	Liquid crystal
Alarm	Audible (local)
Probe range	200 m maximum (dependent on cable style)
ATEX approved	Baseefa 08ATEX0110/1
Specific marking of explosion protection	Ex II (1) G [Ex ia Ga] IIC (-20°C ≤ Ta ≤ +50°C)

COMPATIBLE PROBE TYPES

High oil	Conductivity or specific gravity
High liquid	Optical or float switch
Silt	Optical

ViroSEP HCA





Let's talk about ViroSEP

01452 300110

ENQUIRIES@DUTYPOINT.COM

DUTYPOINT.COM