

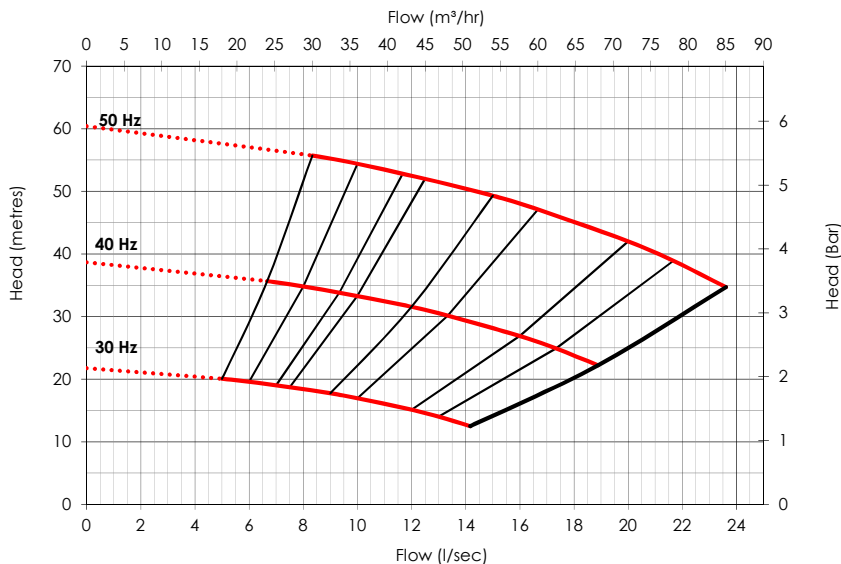
VMV2-20-5V110L02

Product Description

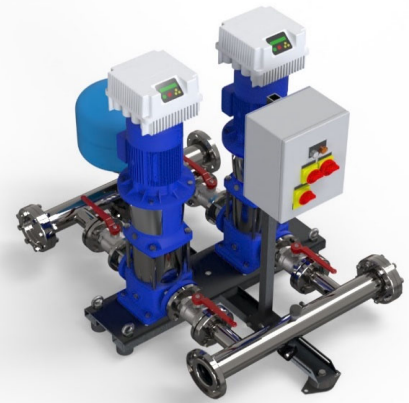
The WRAS approved VMV is a versatile, high-performance cold water booster set constructed using premium components and a strict adherence to quality standards. Specifiers can tailor a booster set to the precise project requirements. The VMV can be delivered disassembled for on-site assembly if required.

- All products in the VMV Cold Water Pressure Booster range are fully WRAS approved.
- Variable speed pumps
- HIRISE technology which protects the building's pipework by ensuring the pumps start slowly during the initial fill process to prevent surge and consequent damage to the riser.
- Intelligent motor control
- Cyclic duty changeover which ensures even wear across all pumps in the system.
- Common alarm volt-free contact
- Hours run recorders
- Pressure set point adjustment
- Local electrical isolation and MCB protection.
- Integral anti-vibration mountings
- TrueStandby™ ensures that every key component in the pressure booster has a back-up to keep the system operational in the rare occurrence of a component failure.

Performance per pump Inverter Controlled



Document #: DOC-11109
Revision: 2



Specification

Suction connection	DN 150
Delivery connection	DN 150
Max operating flow	21.7 l/s
Max operating pressure	5.5 bar
Closed Valve pressure	5.9 bar
Maximum system pressure Rating	16 bar
Speed	Variable
IP Rating	IP55
Motor Power	11 kW
Weight	710 kg
Pressure Vessel(s)	35 litres
Maximum operating temperature	40 °C

DUTYPOINT 

www.dutypoint.com

Electrical Data

Electrical phase	3Φ
Operating speed range	30 - 50Hz
Supply Voltage	400 V
Full load current, per pump	20.6 A
Total Full load current	41.2 A

VMV model Codes

VMV2-20-5V110L02

Number of pumps

Nominal flow (l/s)

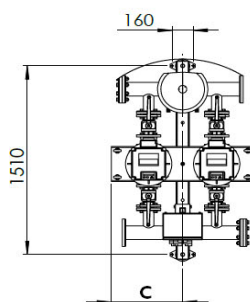
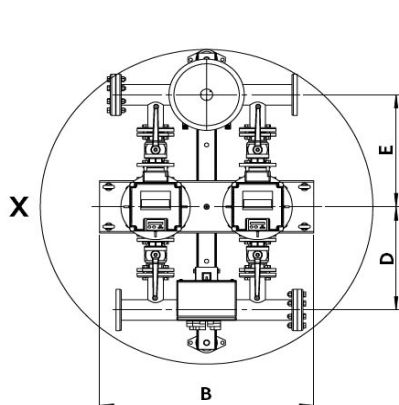
Frequency (50/60 Hz)

Inverter Type

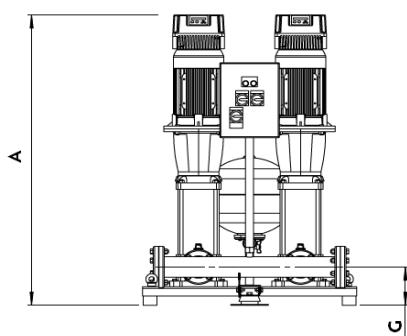
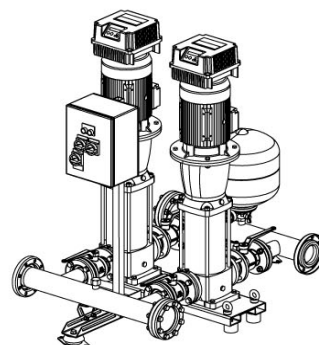
Motor Power

Pump Incremental number

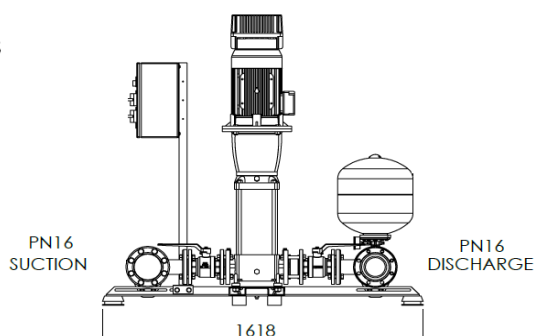
Technical Drawing



DETAIL X SHOWING BASE FASTENING LOCATIONS



DISTANCE BETWEEN OUTRIGGER CENTRES
DIMENSION F



Drawing dimensions

Dimension A	1408
Dimension B	1080
Dimension C	540
Dimension D	666

Dimension E	727
Dimension F	515
Dimension G	240