

VMV4-07-6VI50D01

Product Description

The WRAS approved VMV is a versatile, high-performance cold water booster set constructed using premium components and a strict adherence to quality standards. Specifiers can tailor a booster set to the precise project requirements. The VMV can be delivered disassembled for on-site assembly if required.

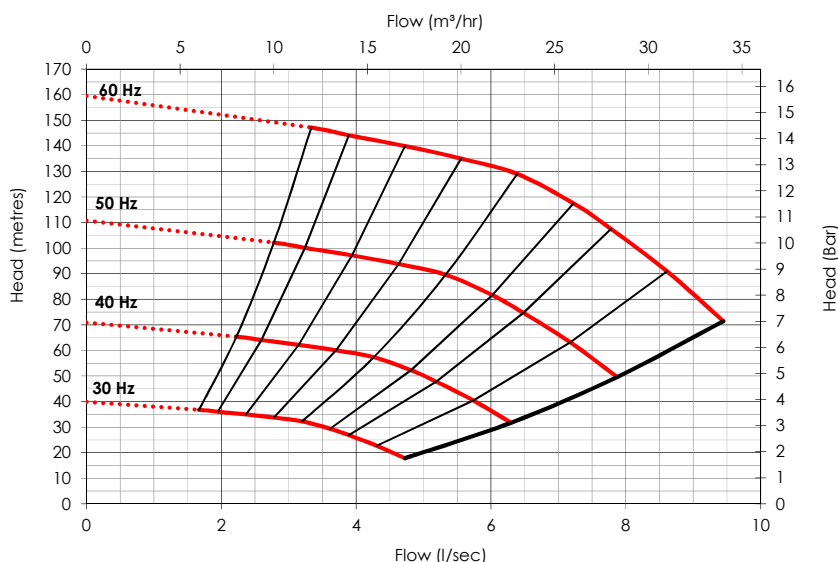
- All products in the VMV Cold Water Pressure Booster range are fully WRAS approved.
- Variable speed pumps
- HIRISE technology which protects the building's pipework by ensuring the pumps start slowly during the initial fill process to prevent surge and consequent damage to the riser.
- Intelligent motor control
- Cyclic duty changeover which ensures even wear across all pumps in the system.
- Common alarm volt-free contact
- Hours run recorders
- Pressure set point adjustment
- Local electrical isolation and MCB protection.
- Integral anti-vibration mountings
- TrueStandby™ ensures that every key component in the pressure booster has a back-up to keep the system operational in the rare occurrence of a component failure.



Specification

Suction connection	DN 150
Delivery connection	DN 150
Max operating flow	8.6 l/s
Max operating pressure	14.4 bar
Closed Valve pressure	15.6 bar
Maximum system pressure Rating	16 bar
Speed	Variable
IP Rating	IP55
Motor Power	15 kW
Weight	1020 kg
Pressure Vessel(s)	105 litres
Maximum operating temperature	40 °C

Performance per pump Inverter Controlled



Document #: DOC-11132
Revision: 2

Electrical Data

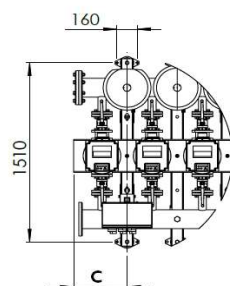
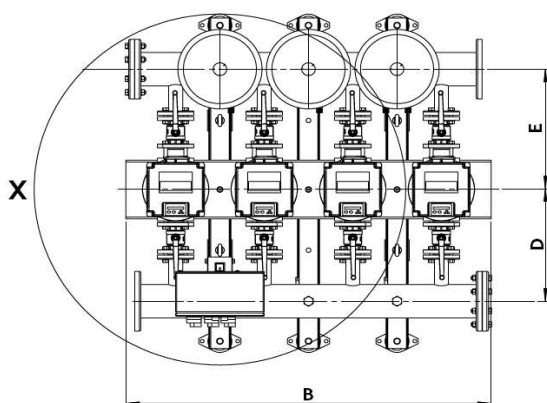
Electrical phase	3Φ
Operating speed range	30 - 60Hz
Supply Voltage	400 V
Full load current, per pump	26.8 A
Total Full load current	107.2 A

VMV model Codes

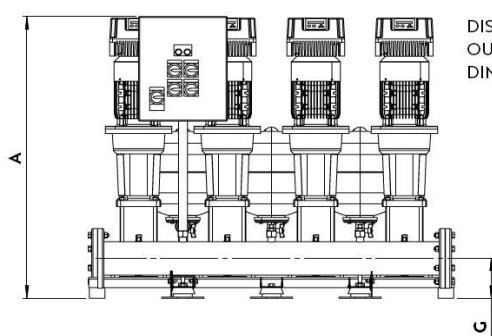
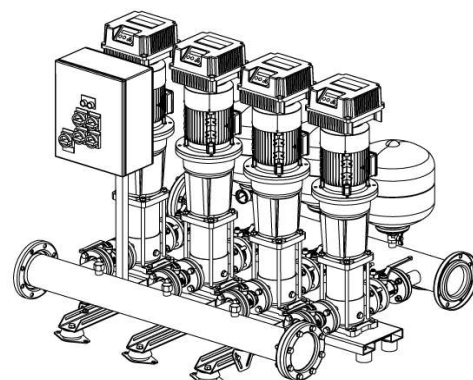
VMV4-07-6V150D01

Number of pumps	
Nominal flow (l/s)	
Frequency (50/60 Hz)	
Inverter Type	
Motor Power	
Pump Incremental number	

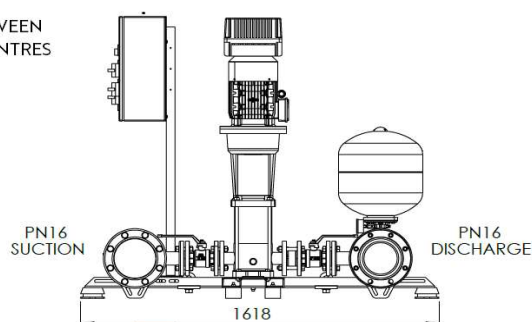
Technical Drawing



DETAIL X SHOWING BASE
FASTENING LOCATIONS



DISTANCE BETWEEN
OUTRIGGER CENTRES
DIMENSION F



Drawing dimensions

Dimension A	1629
Dimension B	1650
Dimension C	425
Dimension D	534

Dimension E	576
Dimension F	400
Dimension G	190