

VQ2-03-011M

Product Description

Dutypoint Systems AirBREAK™ combined cat 5 break tank and variable speed twin pump booster system. Free-standing unit comprising an insulated polyethylene tank with 120L nominal capacity with high flow failsafe motorised inlet valve controlled via probe sensors and an internal flow calming baffle to protect the pump against air locking. Control system includes an electronic variable speed pump controller, common fault and remote inhibit volt-free contacts for connection to BMS, PurgePRO™ automatic pressure vessel purging system, anti-seize protection. Unit also includes pump unions, isolation and non-return valves, pressure vessels and pressure gauge.



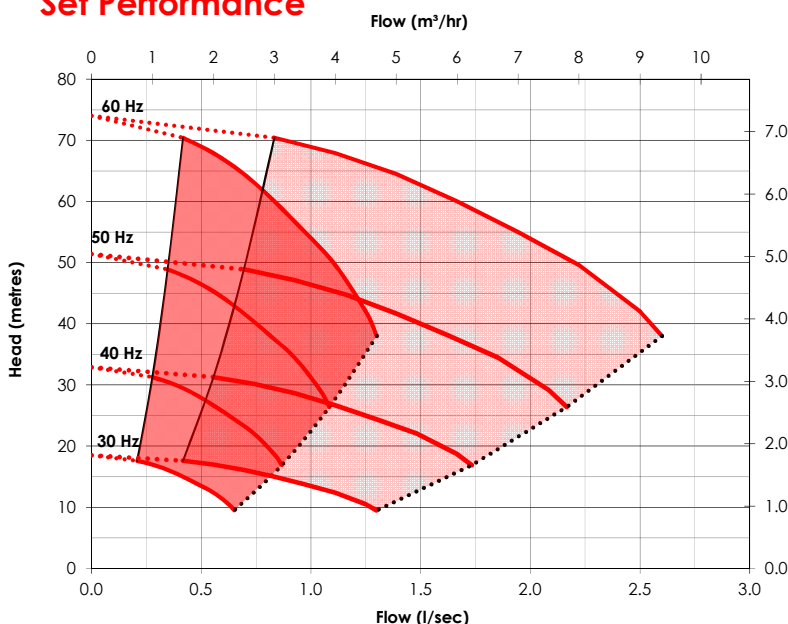
Accreditations	<ul style="list-style-type: none"> - Water Regulations Category 5 backflow prevention compliant - KUK Reg4 Approval Pending (non-wholesome use) - WRAS Approval Pending (non-wholesome use)
Control System	<ul style="list-style-type: none"> - Conductivity probe tank level sensors - Variable speed pump controller with bluetooth for app control - Anti sieze function
Protection	<ul style="list-style-type: none"> - Low level protection against dry running - Pump protection MCB's - Pipework leak detection - PurgePRO™ auto pressure vessel purge function
Available Factory Fitted Optional Extras*	<ul style="list-style-type: none"> - High level alarm VFC - High temperature alarm VFC - Auto purge on high temperature function - Weir tray with waste pipe connection - 120L slave tank with inlet valves
Available Accessories*	<ul style="list-style-type: none"> - Weatherproof kiosk c/w stat and heater - GRP Drip Tray with level sensor

Specification

Inlet connection	1 1/4" BSP
Delivery connection	1 1/2" BSP
Max operating flow (per pump)	1.3 l/s
Max operating pressure	6.9 bar
Closed valve pressure	7.3 bar
Maximum system pressure rating	10 bar
Speed	Variable
IP rating	IP44
Motor power	1.1 kW
Weight	105 kg
Pressure vessels N° x [Litres]	2
Maximum operating temperature	23 °C

*For high temperature applications please contact the office.

Set Performance



DUTYPOINT

www.dutypoint.com

Electrical Data

Supply Voltage/Φ/Hz
230/1/50
Full Load Current (Per pump)
4.1 A

Model Codes

VQ2-03-011M

VQ - Variable Speed High Performance
 FQ - Fixed Speed High Performance
 FC - Fixed Speed Compact

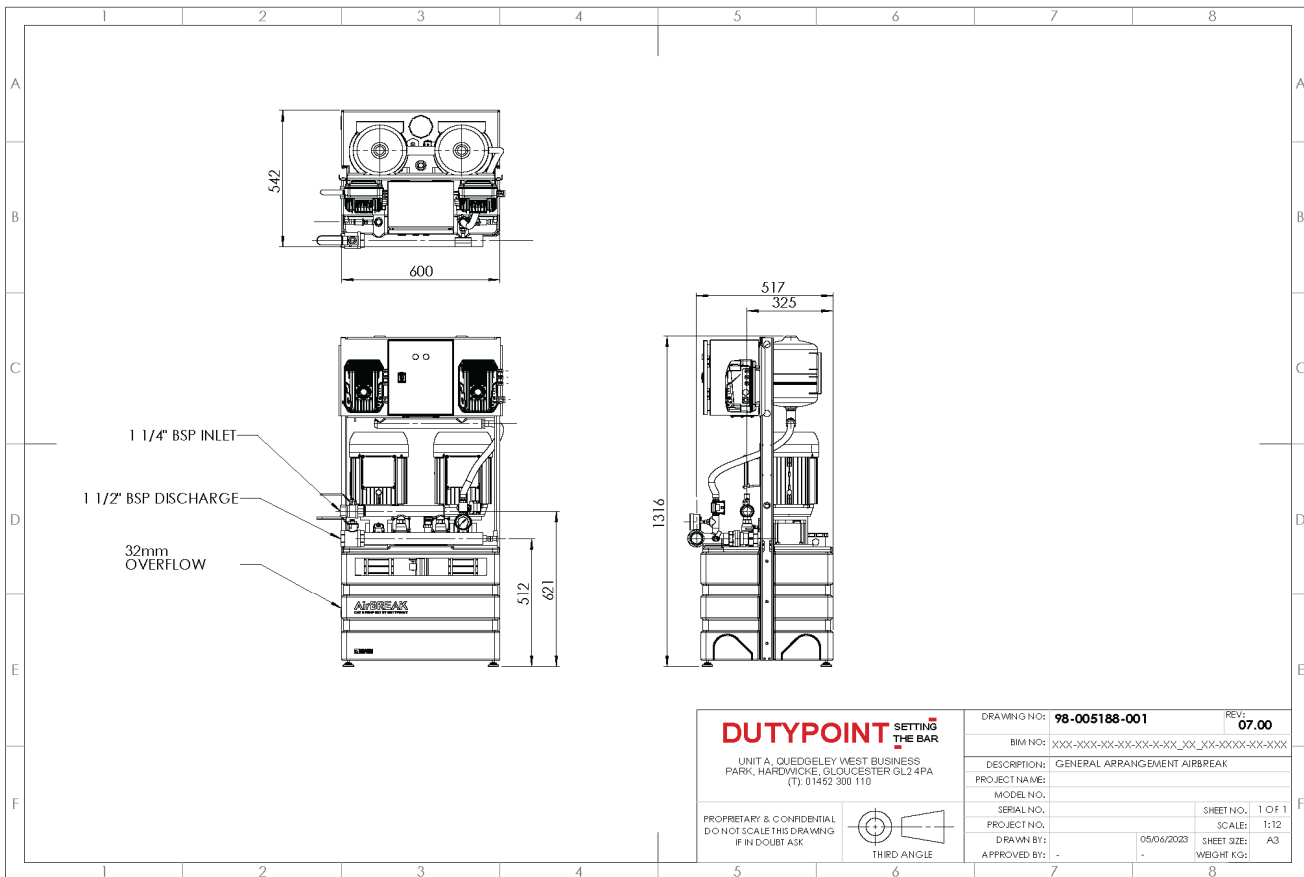
Number of pumps

Nominal flow (m³/h)

Motor kW per pump

Power supply

Technical Drawing



DUTYPOINT SETTING THE BAR UNIT A, QUEDGELEY WEST BUSINESS PARK, HARDWICKE, GLOUCESTER GL2 4PA (T) 01452 300 110 PROPRIETARY & CONFIDENTIAL DO NOT SCALE THIS DRAWING IF IN DOUBT ASK	DRAWING NO:	98-005188-001	REV:	07.00
	BIM NO:	XXX-XXX-XX-XX-XX-X-XX_XX_XX-XXXX-XX-XXX		
	DESCRIPTION:	GENERAL ARRANGEMENT AIRBREAK		
	PROJECT NAME:			
	MODEL NO.		SHEET NO.	1 OF 1
	SERIAL NO.		SCALE:	1:12
	PROJECT NO.		SHEET SIZE:	A3
	DRAWN BY:		DATE:	05/06/2023
	APPROVED BY:		WEIGHT KG:	

