

## VQ2-03-015M

### Product Description

Dutypoint Systems AirBREAK™ combined cat 5 break tank and variable speed twin pump booster system. Free-standing unit comprising an insulated polyethylene tank with 120L nominal capacity with high flow failsafe motorised inlet valve controlled via probe sensors and an internal flow calming baffle to protect the pump against air locking. Control system includes an electronic variable speed pump controller, common fault and remote inhibit volt-free contacts for connection to BMS, PurgePRO™ automatic pressure vessel purging system, anti-seize protection. Unit also includes pump unions, isolation and non-return valves, pressure vessels and pressure gauge.

<b>Accreditations</b>	<ul style="list-style-type: none"> <li>- Water Regulations Category 5 backflow prevention compliant</li> <li>- KUK Reg4 Approval Pending (non-wholesome use)</li> <li>- WRAS Approval Pending (non-wholesome use)</li> </ul>
<b>Control System</b>	<ul style="list-style-type: none"> <li>- Conductivity probe tank level sensors</li> <li>- Variable speed pump controller with bluetooth for app control</li> <li>- Anti seize function</li> </ul>
<b>Protection</b>	<ul style="list-style-type: none"> <li>- Low level protection against dry running</li> <li>- Pump protection MCB's</li> <li>- Pipework leak detection</li> <li>- PurgePRO™ auto pressure vessel purge function</li> </ul>
<b>Available Factory Fitted Optional Extras*</b>	<ul style="list-style-type: none"> <li>- High level alarm VFC</li> <li>- High temperature alarm VFC</li> <li>- Auto purge on high temperature function</li> <li>- Weir tray with waste pipe connection</li> <li>- 120L slave tank with inlet valves</li> </ul>
<b>Available Accessories*</b>	<ul style="list-style-type: none"> <li>- Weatherproof kiosk c/w stat and heater</li> <li>- GRP Drip Tray with level sensor</li> </ul>

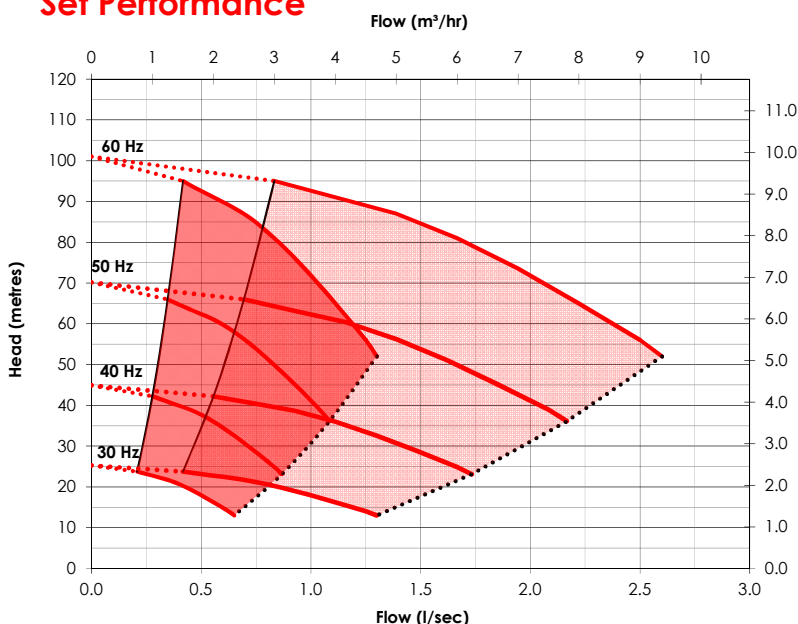


### Specification

Inlet connection	1 1/4" BSP
Delivery connection	1 1/2" BSP
Max operating flow (per pump)	1.3 l/s
Max operating pressure	9.3 bar
Closed valve pressure	9.9 bar
Maximum system pressure rating	16 bar
Speed	Variable
IP rating	IP44
Motor power	1.5 kW
Weight	115 kg
Pressure vessels N° x [Litres]	2
Maximum operating temperature	23 °C

\*For high temperature applications please contact the office.

### Set Performance



# DUTYPOINT

[www.dutypoint.com](http://www.dutypoint.com)

## Electrical Data

Supply Voltage/Φ/Hz
230/1/50
Full Load Current (Per pump)
5.4 A

## Model Codes

# VQ2-03-015M

VQ - Variable Speed High Performance  
 FQ - Fixed Speed High Performance  
 FC - Fixed Speed Compact

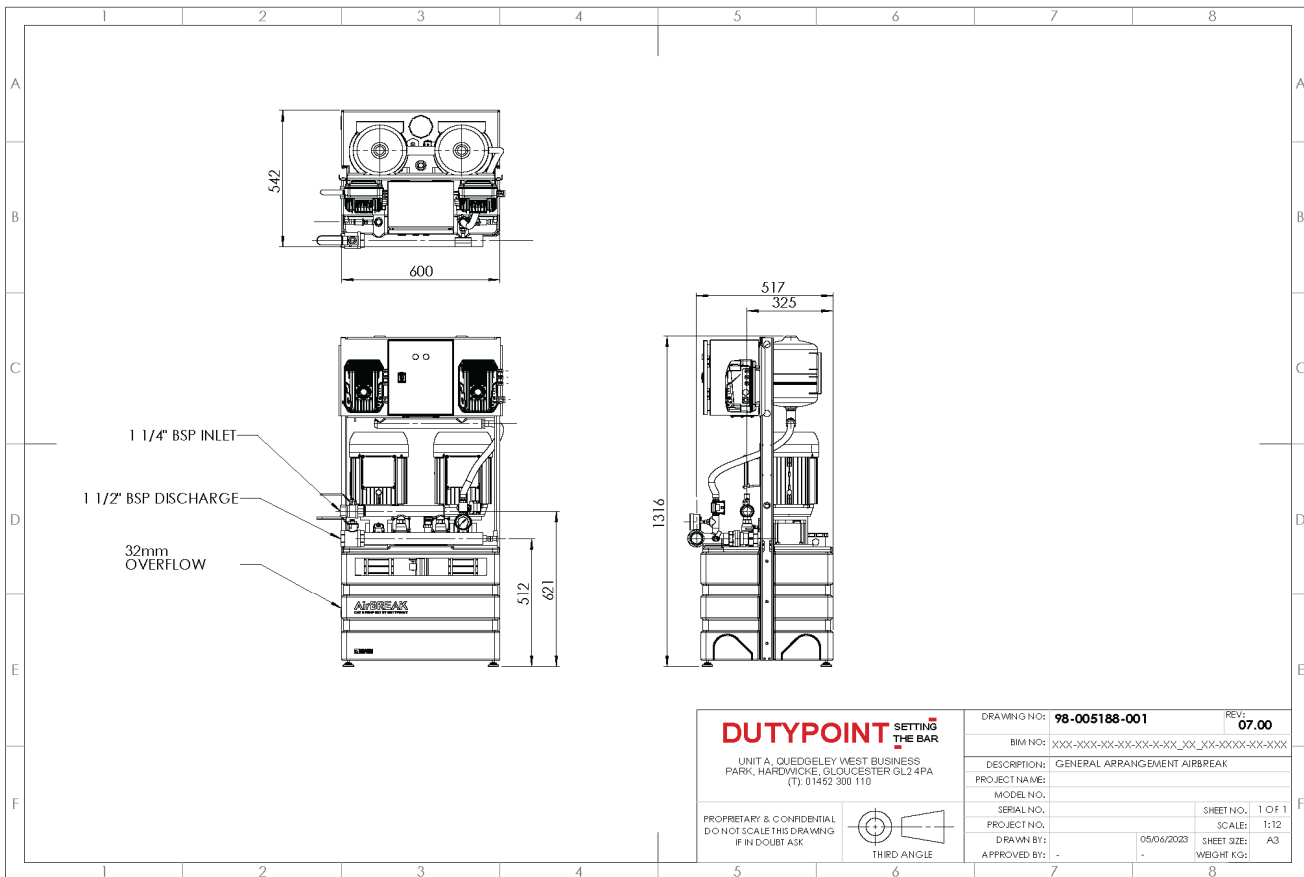
Number of pumps

Nominal flow (m<sup>3</sup>/h)

Motor kW per pump

Power supply

## Technical Drawing



<b>DUTYPOINT</b> SETTING THE BAR UNIT A, QUEDGELEY WEST BUSINESS PARK, HARDWICKE, GLOUCESTER GL2 4PA (T) 01452 300 110 PROPRIETARY & CONFIDENTIAL DO NOT SCALE THIS DRAWING IF IN DOUBT ASK	DRAWING NO:	98-005188-001	REV:	07.00
	BIM NO:	XXX-XXX-XX-XX-XX-X-XX_XX_XX-XXX-XX-XXX		
	DESCRIPTION:	GENERAL ARRANGEMENT AIRBREAK		
	PROJECT NAME:			
	MODEL NO.			
	SERIAL NO.			
	PROJECT NO.			
	DRAWN BY:	05/06/2023	SHEET NO.:	1 OF 1
	APPROVED BY:		SHEET SIZE:	A3
			WEIGHT KG:	

